

Okaloosa County

Florida

Tourist Development Tax

September Tax Revenue Report

Fiscal Year 2012-2013

Benjamin F. Anderson
Okaloosa County Tax Collector

Prepared by:
Joshua Allen
Director of Field Services

2% Tax Revenue Comparison
FY 2012-2013
Sep-13

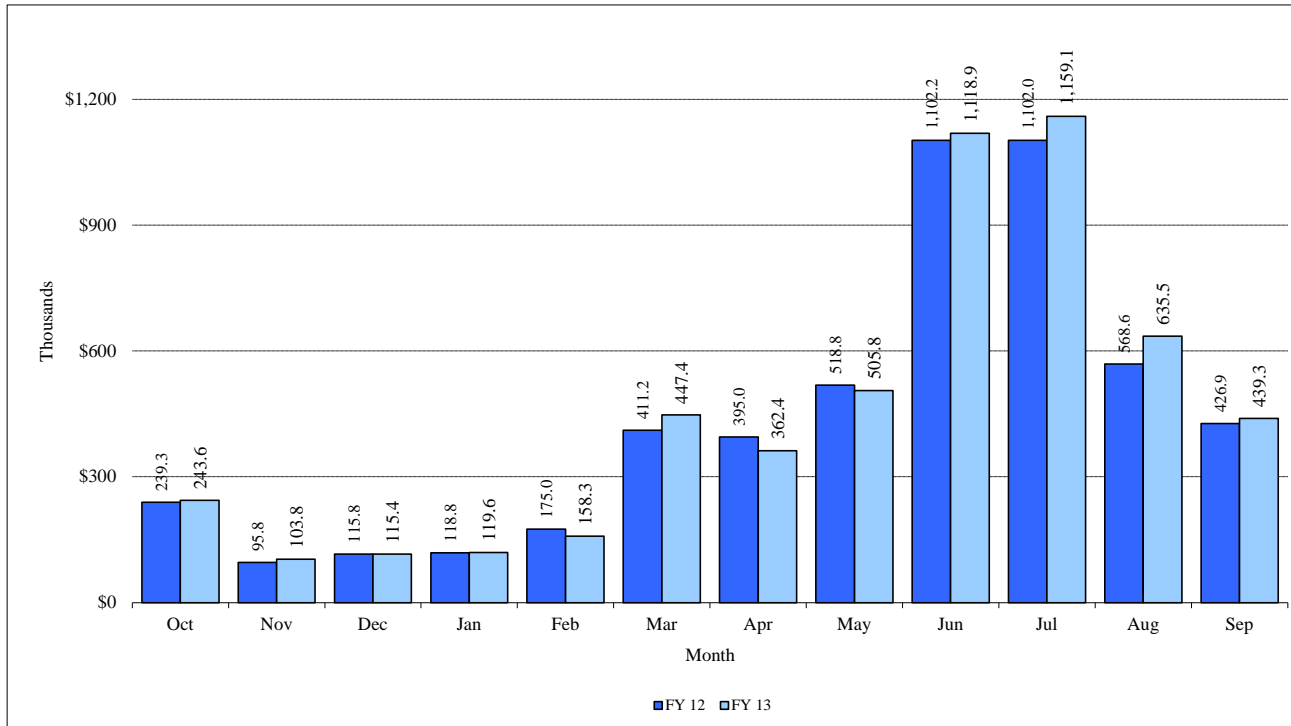
Month	FY 2010	FY 2011	FY 2012	% (+/-) 2011-2012	FY 2013	% (+/-) 2012-2013	Cum (+/-) 2012-2013
October	\$208,977.36	\$208,664.14	\$239,263.06	14.49%	\$243,636.58	1.83%	1.83%
November	\$84,281.68	\$85,578.86	\$95,804.36	11.95%	\$103,842.78	8.39%	3.70%
December	\$94,062.88	\$87,168.92	\$115,837.94	32.89%	\$115,399.32	-0.38%	2.66%
January	\$114,386.58	\$102,709.90	\$118,848.02	15.71%	\$119,598.16	0.63%	2.23%
February	\$150,589.56	\$146,196.00	\$175,045.62	19.73%	\$158,315.82	-9.56%	-0.54%
March	\$290,908.68	\$307,516.00	\$411,221.10	33.72%	\$447,446.44	8.81%	2.79%
April	\$311,611.22	\$338,990.46	\$394,985.04	16.52%	\$362,385.64	-8.25%	-0.02%
May	\$382,012.94	\$431,609.94	\$518,789.68	20.20%	\$505,842.80	-2.50%	-0.64%
June	\$692,390.26	\$916,273.72	\$1,102,176.50	20.29%	\$1,118,890.32	1.52%	0.11%
July	\$593,200.98	\$1,099,882.80	\$1,102,020.72	0.19%	\$1,159,058.66	5.18%	1.41%
August	\$302,546.20	\$490,081.96	\$568,563.58	16.01%	\$635,505.22	11.77%	2.63%
September	\$280,298.58	\$411,411.90	\$426,859.80	3.75%	\$439,365.94	2.93%	2.65%
Total	\$3,505,266.92	\$4,626,084.60	\$5,269,415.42	13.91%	\$5,409,287.68	2.65%	2.65%

Total (5%) collections \$1,098,414.84

Amounts for September 2013 reported by the Okaloosa County Tax Collector's Office. All amounts prior to September 2013 reported by the Okaloosa County Clerk of Courts.

2 % Monthly Collections Comparison

Sep-13



	FY 12	FY 13
Oct	239.3	243.6
Nov	95.8	103.8
Dec	115.8	115.4
Jan	118.8	119.6
Feb	175.0	158.3
Mar	411.2	447.4
Apr	395.0	362.4
May	518.8	505.8
Jun	1,102.2	1,118.9
Jul	1,102.0	1,159.1
Aug	568.6	635.5
Sep	426.9	439.3

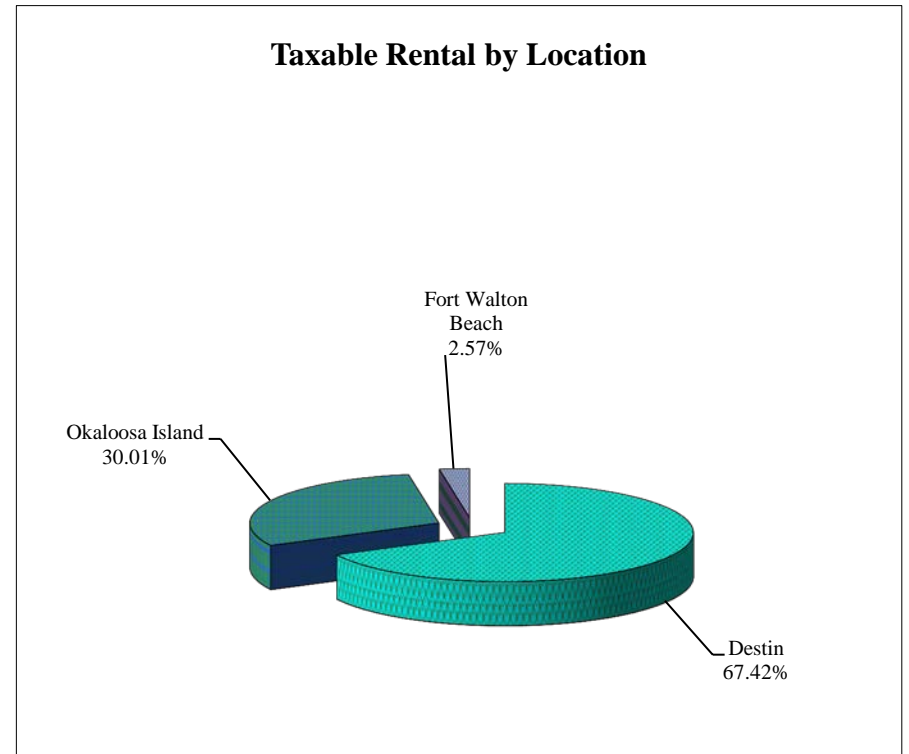
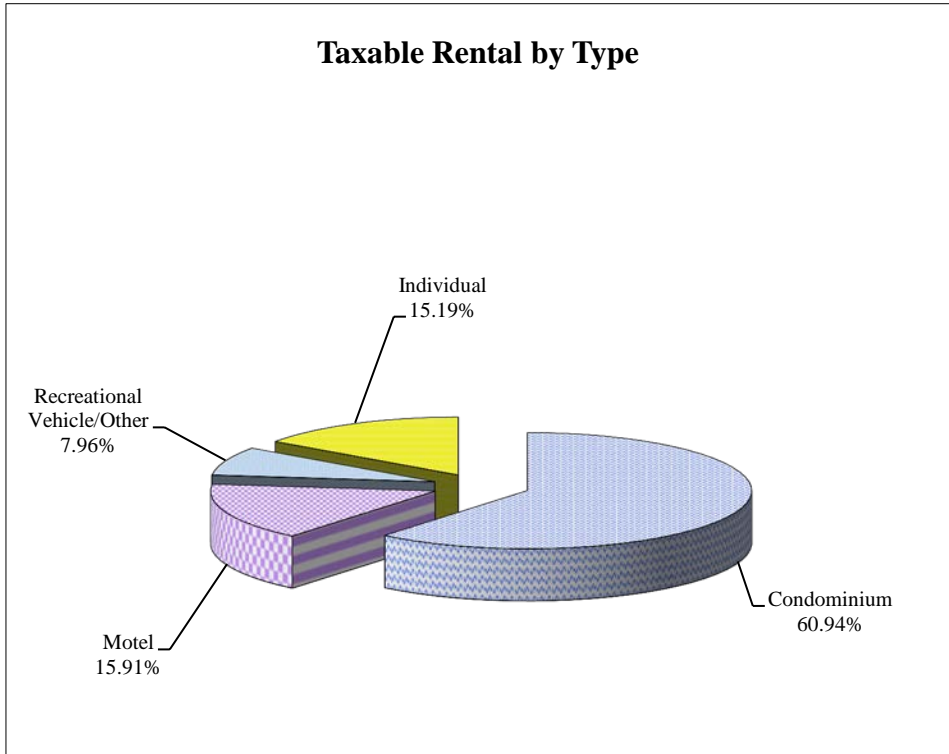
Amounts for September 2013 reported by the Okaloosa County Tax Collector's Office. All amounts prior to September 2013 reported by the Okaloosa County Clerk of Courts.

Gross Sales and Total Collections
Sep-13

	Gross Sales	Exempt Sales	Taxable Rental	Tax Collected	Penalty	Interest	Collection Allowance	Remitted Amount	TC Allowance
Condo	\$13,917,720.53	\$372,034.55	\$13,545,685.98	\$752,370.66	\$921.51	\$12.63	\$6,598.82	\$746,705.98	\$22,401.18
Motel	\$3,800,867.26	\$264,810.39	\$3,536,056.87	\$176,802.88	\$0.00	\$0.00	\$797.84	\$176,005.04	\$5,280.15
RV/Other	\$2,050,735.41	\$281,252.07	\$1,769,483.34	\$75,053.05	\$200.00	\$0.75	\$384.24	\$74,869.56	\$2,246.09
Individual	\$3,387,108.58	\$12,032.13	\$3,375,076.45	\$101,876.28	\$155.93	\$0.81	\$1,198.76	\$100,834.26	\$3,025.03
Total	\$23,156,431.78	\$930,129.14	\$22,226,302.64	\$1,106,102.87	\$1,277.44	\$14.19	\$8,979.66	\$1,098,414.84	\$32,952.45

Percentage for Taxable Rental by Type and Location

Sep-13



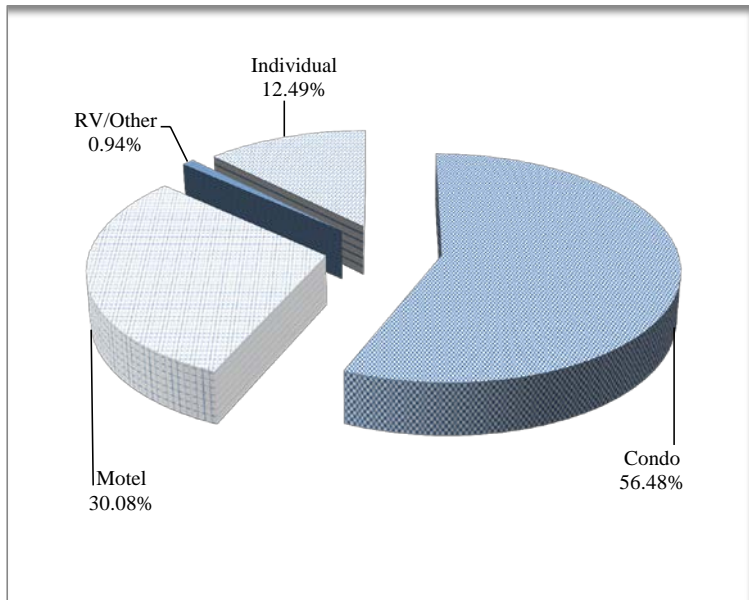
Type	Taxable Rental	%
Condominium	\$13,545,685.98	60.94%
Motel	\$3,536,056.87	15.91%
Recreational Vehicle/Other	\$1,769,483.34	7.96%
Individual	\$3,375,076.45	15.19%
Total	\$22,226,302.64	100.00%

Location	Taxable Rental	%
Destin	\$14,984,483.64	67.42%
Okaloosa Island	\$6,670,407.52	30.01%
Fort Walton Beach	\$571,411.48	2.57%
Total	\$22,226,302.64	100.00%

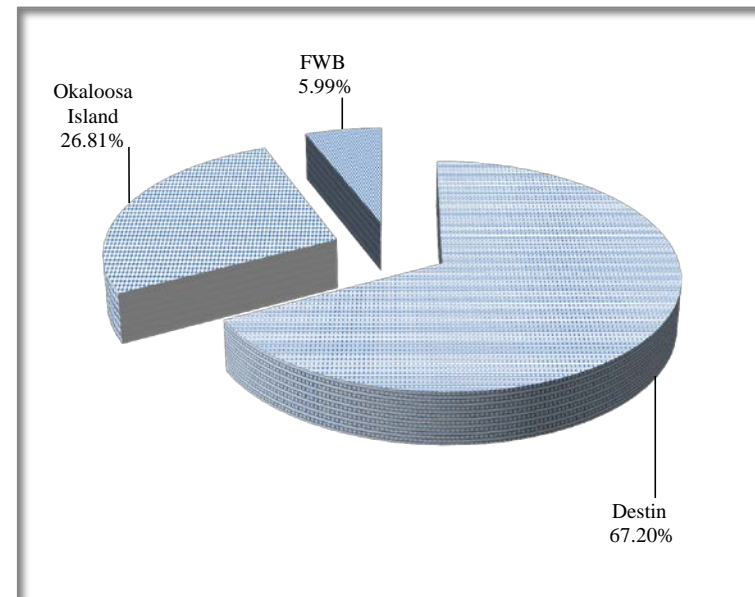
Year to Date Percentage for Taxable Rental by Type and Location

Sep-13

Taxable Rentals by Type



Taxable Rentals by Location



Type	Oct	Nov	Dec	Jan	Feb	Mar	Apr	May	Jun	Jul	Aug	Sep	Year to Date
Condo	7,669,784	3,022,734	2,475,929	3,733,904	5,319,643	13,151,437	11,495,805	16,981,075	37,610,269	43,795,660	23,460,629	13,545,686	182,262,555
Motel	3,397,650	1,816,127	1,519,608	1,553,265	2,080,718	5,141,664	5,322,967	6,138,610	9,807,034	10,921,061	6,368,111	3,536,057	57,602,872
RV	68,102	66,881	23,327	119,712	74,424	143,101	138,051	124,256	172,876	216,561	105,083	1,769,483	3,021,857
Ind	1,008,563	295,794	1,760,255	515,960	533,999	4,020,248	1,173,925	2,017,956	10,024,668	3,890,174	2,316,359	3,375,076	30,932,977

Location	Oct	Nov	Dec	Jan	Feb	Mar	Apr	May	Jun	Jul	Aug	Sep	Year to Date
Destin	8,084,397	3,634,612	3,762,065	4,037,684	5,395,864	15,374,969	11,071,768	16,870,323	36,941,333	38,299,304	21,227,523	14,984,484	179,684,326
OI	3,444,096	1,161,258	1,688,278	1,495,438	2,195,248	6,237,508	6,276,315	7,453,171	17,840,093	18,181,421	9,702,600	6,670,408	82,345,832
FWB	615,607	405,667	328,775	389,719	417,671	843,973	782,664	938,402	1,364,980	1,545,934	911,272	571,411	9,116,076

Amounts for September 2013 reported by the Okaloosa County Tax Collector's Office. All amounts prior to September 2013 reported by the Okaloosa County Clerk of Courts.

Total TDT Collections Year to Date
FY 2012-2013
Sep-13

		Total Collections	2% Collections	Third % Collections	Fourth % Collections	Fifth % Collections
Oct	2012	609,091	243,637	121,818	121,818	121,818
Nov	2012	259,607	103,843	51,921	51,921	51,921
Dec	2012	288,498	115,399	57,700	57,700	57,700
Jan	2013	298,995	119,598	59,799	59,799	59,799
Feb	2013	395,790	158,316	79,158	79,158	79,158
Mar	2013	1,118,616	447,446	223,723	223,723	223,724
Apr	2013	905,964	362,385	181,193	181,193	181,193
May	2013	1,264,607	505,843	252,921	252,921	252,922
Jun	2013	2,797,226	1,118,890	559,445	559,445	559,445
Jul	2013	2,897,647	1,159,059	579,529	579,529	579,530
Aug	2013	1,588,763	635,505	317,752	317,752	317,754
Sep	2013	1,098,415	439,366	219,683	219,683	219,683
Total Collected		<u>13,523,220</u>	<u>5,409,287</u>	<u>2,704,643</u>	<u>2,704,642</u>	<u>2,704,647</u>

Amounts for September 2013 reported by the Okaloosa County Tax Collector's Office. All amounts prior to September 2013 reported by the Okaloosa County Clerk of Courts.